



WELCOME TO THE WINDSOR OF PALM COAST

Living at The Windsor, you'll enjoy days filled with social opportunities, engaging outings and educational endeavors, great dining, and opportunities to meet new people and build lasting relationships. Life will be comfortable in your private apartment complete with a fully-equipped kitchenette and individual temperature controls.

The environment inside The Windsor is purposefully designed to offer a variety of experiences centered on building community and supporting each person's independence. You'll enjoy meals in our Palma Sola dining room or all-day snacks and coffee at the Courtyard Coffee Café. Relax with a great book in our library or join us for crafts and activities in our Life Enrichment Center. The Windsor Salon offers hair and nail appointments. You can stay fit in the fitness center or schedule your home health trainer or therapist. With your privacy in mind, we've created a Personal Care Suite where you can consult with our health care team in a comfortable private setting.

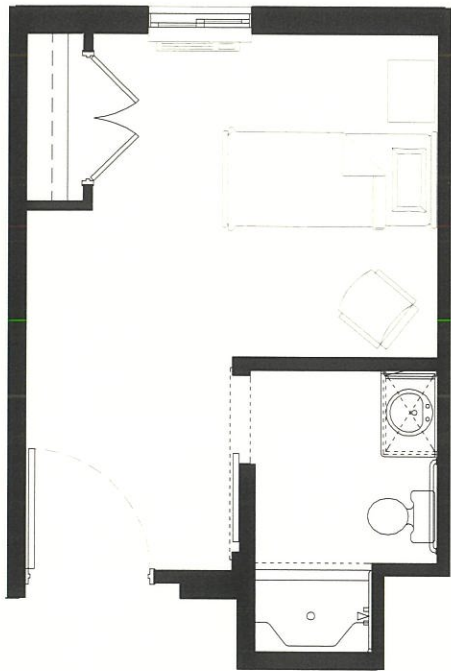
Look at What's Waiting for You

This two-story community has seven distinctive apartment designs and is full of inviting social spaces and personalized touches, designed with you in mind. Each apartment offers you privacy and the ability to make it uniquely your own. Relax, socialize and enjoy the walking paths and beautiful outdoor spaces while you enjoy the Florida sunshine.

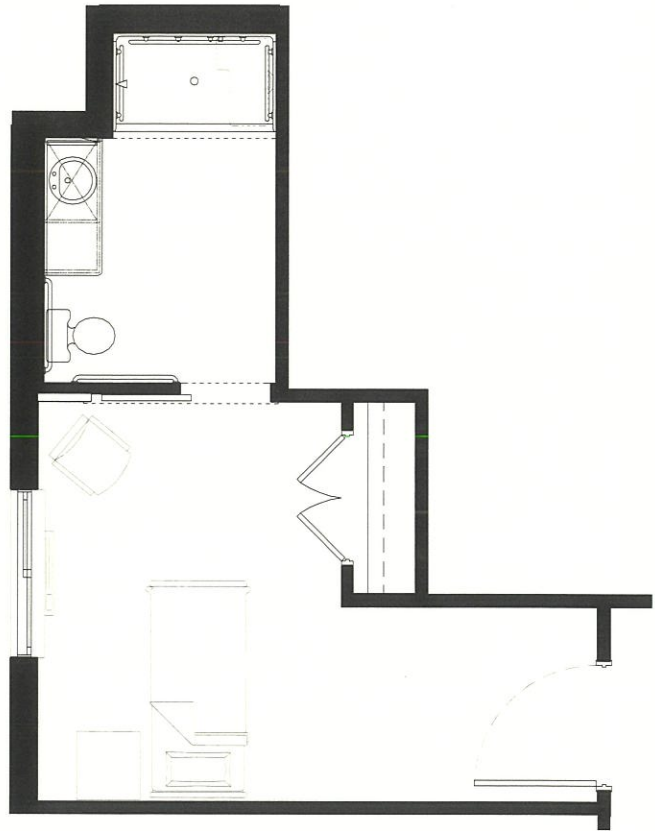
Conveniently located near Central Park in Town Center which hosts a variety of fun events, we are also just minutes from Flagler Auditorium, Palm Coast Landing and the beautiful Flagler Beach. Florida Hospital Flagler is less than a mile from our front door. The Windsor of Palm Coast offers assisted living and memory care services in a friendly, comfortable setting.

APARTMENT STYLES

Memory Care



A
Suite
Approx. 280 sq. ft.



B
Suite
Approx. 320 sq. ft.

Renderings are representational. Some variations may occur.

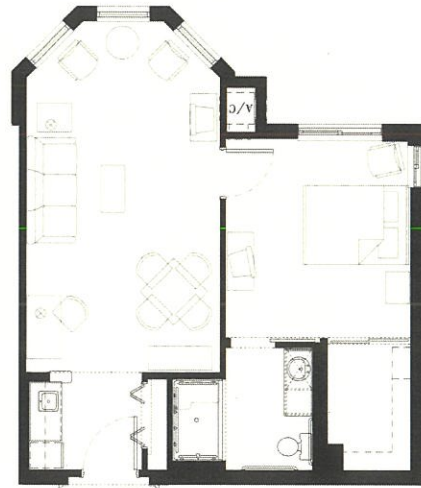
APARTMENT STYLES

Assisted Living



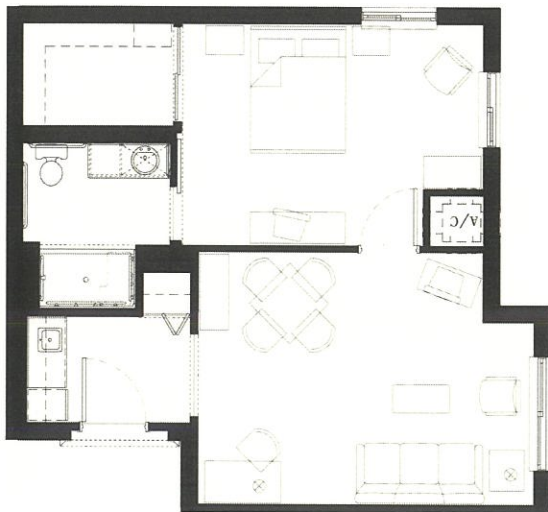
Ibis

1 Bedroom
Approx. 599 sq. ft.



Crane

1 Bedroom
Approx. 638 - 667 sq. ft.



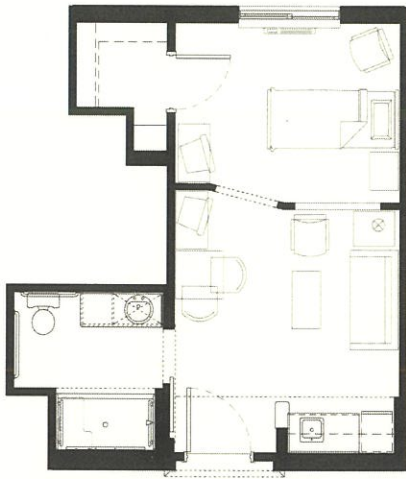
Osprey

1 Bedroom
Approx. 678 sq. ft.

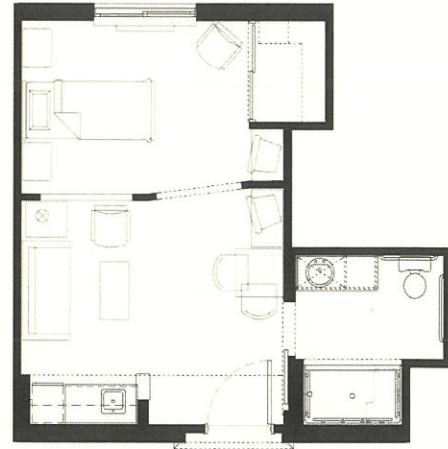
Renderings are representational. Some variations may occur.

APARTMENT STYLES

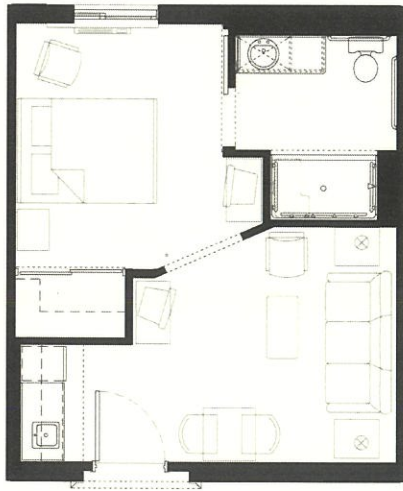
Assisted Living



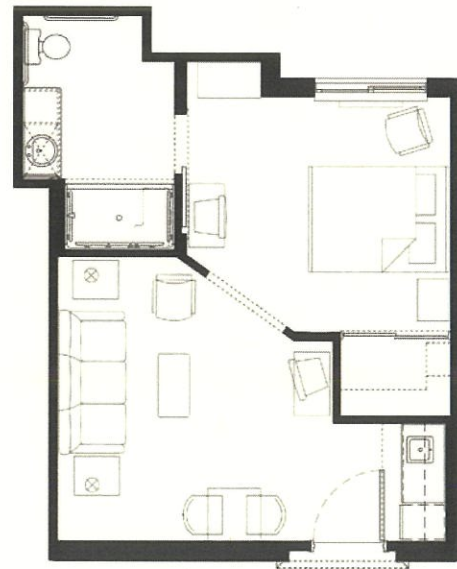
Sandpiper
1 Bedroom
Approx. 370 - 397 sq. ft.



Tern
1 Bedroom
Approx. 410 sq. ft.



Heron
1 Bedroom
Approx. 423 - 470 sq. ft.



Pelican
1 Bedroom
Approx. 423 - 467 sq. ft.

Courtyard
Available

Renderings are representational. Some variations may occur.

TAILORED SERVICES

LIVE THE WAY YOU WANT.

Our approach to care begins with the recognition that every person has unique needs and desires. We take the time to get to know you individually before adapting our delivery of services to your needs. Through this process of putting you first, we offer flexible pricing tailored to each individual's combination of services. You can rest, knowing you are not paying for unnecessary services through a "one-size-fits-all" or "all-inclusive" pricing. Because of The Windsor's individualized approach, you can be confident the services are just right for you.

The Windsor Tailored Services individualized plan begins with a personal interview with you, your family, and others you may choose. We are committed to listening to you and your family. From this interview, a customized plan of care and services is developed uniquely for you.

Tailored Services can include

- Medication assistance
- Certain specialized diets
- Assistance with bathing, dressing, grooming, and other personal care needs
- Mobility assistance
- Personal laundry services
- Companion Services

You have unique needs and a specific way you want to live your life. We understand that desire and are committed to your independence, dignity and right to personal choices.



LIFE ENRICHMENT

The Windsor is more than a home, it's a lifestyle. Find satisfaction and fulfillment by indulging in your favorite interests and endeavors or discover new interests together with friends.

We are privileged to serve residents who live full lives and have contributed so much to the world around them. We serve to help people continue their involvement in community and in those passions that fuel their individual interests and growth. Our passion is creating opportunities and environments for you to enjoy life. To have fun.

Living at The Windsor, you'll enjoy days filled with outings, educational endeavors, pursuing hobbies, physical fitness, fun, and opportunities to meet new people and build lasting relationships. We create experiences specifically designed to enhance living and enrich lives.

The Windsor's experienced Life Enrichment team creates a full calendar of cultural and community events, educational opportunities, religious activities, and interesting trips. The team also tailors programs and events specifically to the interests of the residents.

Some of the Life Enrichment opportunities include

- Trips to the theater and art venues
- Outings to shopping and attractions
- Community and cultural events
- Informative lectures and educational speakers
- Volunteer opportunities
- Fitness classes
- Walking groups
- Social and themed parties
- Book clubs
- Family events
- And much more

Enjoy each day more than the last, it is your time to spend as you choose. Ask an associate for the latest newsletter and calendar of events. We invite you to come experience life at The Windsor first-hand. Please be our guest at any upcoming event or activity.



GOLD LEAF DINING

The Windsor is dedicated to a holistic culinary experience. Our Gold Leaf Dining offers residents savory dishes, healthy nutrition, personal service, and enjoyable dining experiences with friends and neighbors.

The Windsor works with professional teams of culinary and nutritional experts to plan an appealing variety of delicious food choices while providing a well-balanced diet. Chefs at each location seek input from residents and add local customization based on individual preferences. Then menus are crafted by a national, registered dietician, and menu cycles are approved by state dietitians so tasteful, local dishes can be identified and served. Each meal is prepared with fresh ingredients in our own kitchen by a team of Gold Leaf Chefs.

GOLD LEAF CHOICE

Having choices available to meet changing tastes adds to resident dining satisfaction. For lunch and dinner, you may choose a freshly-prepared entrée selection from the Gold Leaf Choice menu. This menu includes your choice of two savory entrées, including a Healthy Choice selection.* For those days when you feel like having something different, The Windsor offers our Café Select menu. The Café offers an alternative list of popular dishes available at lunch or dinner, with regular local updates by the chef. We also offer an "Anytime Dining" menu of dishes available outside of scheduled dining hours.*

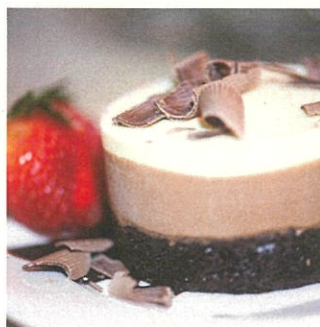
Greet the mornings with breakfast featuring a wide selection of traditional items cooked fresh to order each morning.

GOLD LEAF EXPERIENCE

Our goal is creating dining experiences that include cultivating meaningful relationships and building lasting memories as you gather around the table together. We understand how much social interaction and enjoyment adds to overall health and wellness. Meals are served right to your table by friendly waitstaff who know you by name and understand your personal dining preferences.

Nutritious, flavorful dishes served in an inviting, enjoyable atmosphere enhance wellness and add wholeness to life. Come be our guest for a meal and experience Gold Leaf Dining first-hand.

**Available at most locations.*



COMPANION SERVICES

Often times it is helpful to have individual assistance in addition to regularly scheduled care - someone to help for extended periods with tasks or to serve as a companion or private assistant to personally serve you.

Windsor Companions provide this additional level of individual attention and services for specific needs or requests that any resident may have. These personalized services and pricing tiers are in addition to the quality range of services provided through the resident care plan.

Windsor Companions spend quality individual time with residents at their request, providing a variety of services, whether it be reading, assisting with activities, trips, personal assistance on shopping trips, writing correspondence, or just knowing someone is nearby.

Companion Services can include

- Escort to and from appointments
- Socialization and support
- Encourage participation in activities
- Help with correspondence
- Reading, visiting
- Sharing interests and talents
- Participate in hobbies and crafts
- Aid in personal shopping
- Escort for family dinner or social events
- Additional housekeeping
- Information source
- Additional assistance with personal care
- Range of motion exercises
- Assistance with walking and transfers
- Personalized assistance with nighttime or morning routines

Ask a sales associate how to customize a comforting companionship program.



MEMORY CARE

PURPOSEFUL EXPERIENCES

The Windsor's strategic approach to Memory Care focuses on improving the quality of life for each resident. Studies show that active therapy can help reduce the need for certain medications. Our programs are created to support the science of Neuroplasticity – the brain's ability to create new pathways for learning and connecting with the world around us.

Through decades of research and medical partnerships, we have developed Parallel Programming, which is designed to provide each resident opportunities for activities promoting self-esteem and accomplishment at any level of cognitive ability. Our structured method is based on a routine of activities that advance from sensory or emotional, to physical, and into memory enhancing. Through repeated cycles, residents build on learning and progressively meaningful experiences. Therapies include innovative robotic bio-feedback therapy, life skills therapy, brain fitness exercises, music experiences, pet therapies, calming therapies, and more.

Serving and caring for residents with Alzheimer's or other types of dementia calls for specialized talent and expertise. Our associates receive training on various types of dementia. They learn the skills and develop the understanding to manage the progressive behavior and indicators while fostering a positive, sensory environment.

Gold Leaf Dining focuses on the experience of dining itself, celebrating the aromas and the presentation of food that enhances the appetite and the appeal of eating. Residents benefit from delicious, nutritious chef-prepared meals, beautiful table settings and assistance respectful of their unique needs.

In addition to other clinical assessments, we work with the family to create a Life Story for each resident so we may know them more personally and incorporate these experiences into their routine. Through this practice, we can engage each resident more deeply and serve them with dignity and respect.

PURPOSEFUL DESIGN

Residents enjoy the familiar warmth and comfort of home. Memory Care neighborhoods are designed to give residents confidence and provide ease of navigation. Soothing colors are selected to reduce anxiety and provide directional queuing. Lifestyle vignettes allow for residents to engage in a familiar task or interest from their life history. Individual suites offer private space to enjoy time with family and friends.

Life is to be enjoyed even as memories may be fading. At The Windsor, we walk beside residents and families as a support system that shares your depth of caring and commitment.

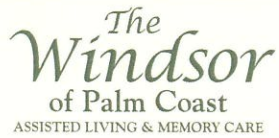
COST OF LIVING COMPARISON

	AT HOME	AT THE WINDSOR
Property Taxes	\$ _____	N/A
Special Assessments	\$ _____	N/A
Utilities	\$ _____	INCLUDED
Electricity	\$ _____	INCLUDED
Water/Storm	\$ _____	INCLUDED
Trash	\$ _____	INCLUDED
Basic Cable	\$ _____	\$ _____
Home Maintenance (per year)	\$ _____	INCLUDED
Painting	\$ _____	INCLUDED
Mechanical Replacements	\$ _____	INCLUDED
Mechanical Servicing	\$ _____	INCLUDED
Carpet/Flooring	\$ _____	INCLUDED
Appliances	\$ _____	INCLUDED
Roofing	\$ _____	INCLUDED
Home Owners Insurance	\$ _____	INCLUDED
Home Owners Dues	\$ _____	INCLUDED
Yard Maintenance or Equipment	\$ _____	INCLUDED
Food Expense	\$ _____	INCLUDED
Transportation/Auto	\$ _____	INCLUDED
Security Monitoring	\$ _____	INCLUDED
Linen Service	\$ _____	INCLUDED
Housekeeping	\$ _____	INCLUDED
Personal Wellness Monitoring	\$ _____	INCLUDED
Costs Incurred by Family Caregivers	\$ _____	\$ _____
Travel Costs	\$ _____	\$ _____
Work/Career Costs	\$ _____	\$ _____
Other Family Costs	\$ _____	\$ _____
Personal Care Services/Home Health*	\$ _____	INCLUDED
Homemaker Avg. \$21/hour	\$ _____	INCLUDED
Home Health Aide Avg. \$25/hour (In-Home Nurse)	\$ _____	INCLUDED
Adult Day Center Avg. \$75/day	\$ _____	INCLUDED
Mortgage/Rent	\$ _____	\$ _____
Other	\$ _____	\$ _____

HOME EXPENSES	\$	
Potential Income from House Equity		
Invested Equity Amount	\$ _____	↓
Percent Interest	% _____	↓
Return	_____	↘
POTENTIAL INCOME from home equity	\$	↓

TOTAL COSTS **AT HOME** \$ _____ **AT THE WINDSOR** \$ _____

* costs shown are 2018 estimates reported by Genworth Financial Inc. Cost of Care Survey. Costs may vary by state.



50 TOWN CT, PALM COAST, FL 32164 | 386-586-3501 | ALF# 11761
 A RESIDENCE OF LEGEND SENIOR LIVING® LegendSeniorLiving.com

ELDERLIFE FINANCIAL SERVICES

NOW THAT YOU'VE FOUND YOUR NEW HOME, LEARN THE BEST WAYS TO PAY FOR IT!

To help seniors and family members understand all available options to pay for Senior Living, Legend is pleased to partner with Elderlife Financial Services. Elderlife provides seniors and their loved ones with financial information, guidance and services that expedite the transition to senior living. Thousands of families trust Elderlife Financial Services to simplify the move to senior living.

With one call, get a complete solution tailored to your needs, including:

Financing Solutions

Get the time and flexibility you need to pay for your rent and care. The Elderlife Bridge Loan gives you funding in as little as 24 hours.

Veterans Benefits Solutions

Qualified veterans and spouses may be eligible for VA benefits to pay for senior living. Elderlife's network of accredited VA agents is ready to help you apply.

Tax Solutions

The cost of senior living may be tax deductible for seniors or their families. An Elderlife partner may be able to help you reduce your tax bill and obtain refunds you might have missed.

Real Estate Solutions

Selling a home to pay for senior living? Out of state or overwhelmed? Get help with cleaning through closing. An experienced Elderlife Real Estate Specialist will guide you every step of the way.

Insurance Solutions

Understand your Long-Term Care policy with a complimentary review, and learn how to use your life insurance policy as a source of funding for senior living.

...and more!

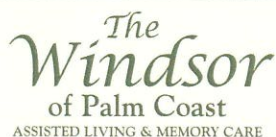
Learn how to pay for senior living in the best way for you. A financial concierge is ready to guide you through your options, and help you make informed financial decisions.



CALL ELDERLIFE FINANCIAL TODAY!

844-265-8105 or visit ElderlifeFinancial.com

Elderlife Financial Lending, LLC | NMLS# 399422 | Branch NMLS# 1237557



50 TOWN CT, PALM COAST, FL 32164 | 386-586-3501 | ALF# 11761

A RESIDENCE OF LEGEND SENIOR LIVING® LegendSeniorLiving.com

KEY BENEFITS

WHAT YOU GET WHEN YOU MOVE INTO LEGEND SENIOR LIVING.

- Independence & Dignity
- A New Life
- Freedom
- Quality of Life
- Time
- Family Back
- Improved Relationships
- Rest
- Health
- Happiness
- Choice
- Security
- Peace of Mind
- Increased Activity
- More Friends
- More Hobbies & Opportunities
- New Challenges
- Purpose
- Fun
- Consistency
- Control
- Energy
- Positivity
- Variety in Life
- Living Assistance
- Significance

